

Asset Mapping For Ec Dev

CANDO Links to Learning
March 30, 2017



Who is KCDC?

- Non Profit Career and Economic Development organization, established 1996
- Provided Youth work experience and training through IT Intern program since 2004
- Recently developed Community Economic Development Intern training (CED Intern)
- Offered CED Intern training for 14 First Nation Youth in _____ communities in 2016/17

CED Intern Training

- Youth and a mentor/supervisor are identified in each community
- Training is held through face to face and online sessions
- Interns are also available to help mentors with community economic development tasks
- At end of program, youth have employable skills and may find work in community or outside, or may choose further post secondary training

Activities

- Use of Global Positioning System (GPS) units to collect business and regional economic value data.
- Use of regional economic value data interpreted through GIS mapping.
- Use of registration forms and pictures to collect data about community businesses. Uploading data to repository system.
- Community Economic Development Training and Certification through Saskatchewan Economic Development Association (SEDA)

Asset Mapping

- **Asset Mapping provides information about the strengths and potential of a community**
- **For the CED Intern program, we focused on business assets this year**
- **Many other assets can be mapped: housing, infrastructure, human resources, culture and history, natural resources**
- **Asset mapping cultural and history and natural resources goes beyond the borders of the community**



Manitou Falls – Fond du Lac River, SK



Businesses and Points of Interest – Beauval, SK

Community economic Development Intern

Shavon Norman



Flying Dust First Nation



- When working with Flying Dust I was stationed in the corporate office with Albert Derocher as my supervisor. It was through Albert I learned a lot about economic development on Flying Dust and wisdom about the job.
- My supervisor and the Flying Dust Administration were always supportive and willing to answer my questions.
- Through my internship I learned how unique our community truly is.

KCDC



- KCDC Staff made the program run very smoothly and whenever I needed help it was given.
- KCDC Staff were also very enthusiastic when teaching us and explained everything in depth.
- The in person training was very beneficial but I learned just as much through the online training sessions as well. I especially liked that our sessions were recorded so if we ever missed something we could go back and watch the lesson again.
- One of the best things about this program was meeting classmates, reaching out to them for help and making new friendships with those people.

SEDA Program

- The Saskatchewan Economic Development Association (SEDA) program was very fast paced and had a lot of impressive information to learn.
- Through this program I learned a lot about economic development in general and tackling real problems that businesses in an economy face.
- In this program they had many assignments where we had to put ourselves in the role of an actual Economic Development Officer and that taught me to look at things from a different perspective.
- It required a lot of determination but in the end I got a certificate that is accredited to the Provincial Professional Certification and also to the National Certification Program

Economic Development



- The Economic Development in my community is very advanced and is one of the reasons why I am so proud of Flying Dust.
- One of the reasons Ec Dev in Flying Dust is so successful is our many partnerships.
- There are also a lot of businesses Flying Dust owns itself that are very successful.
- In the past few years there has been a lot of growth in our First Nation and new buildings constructed.



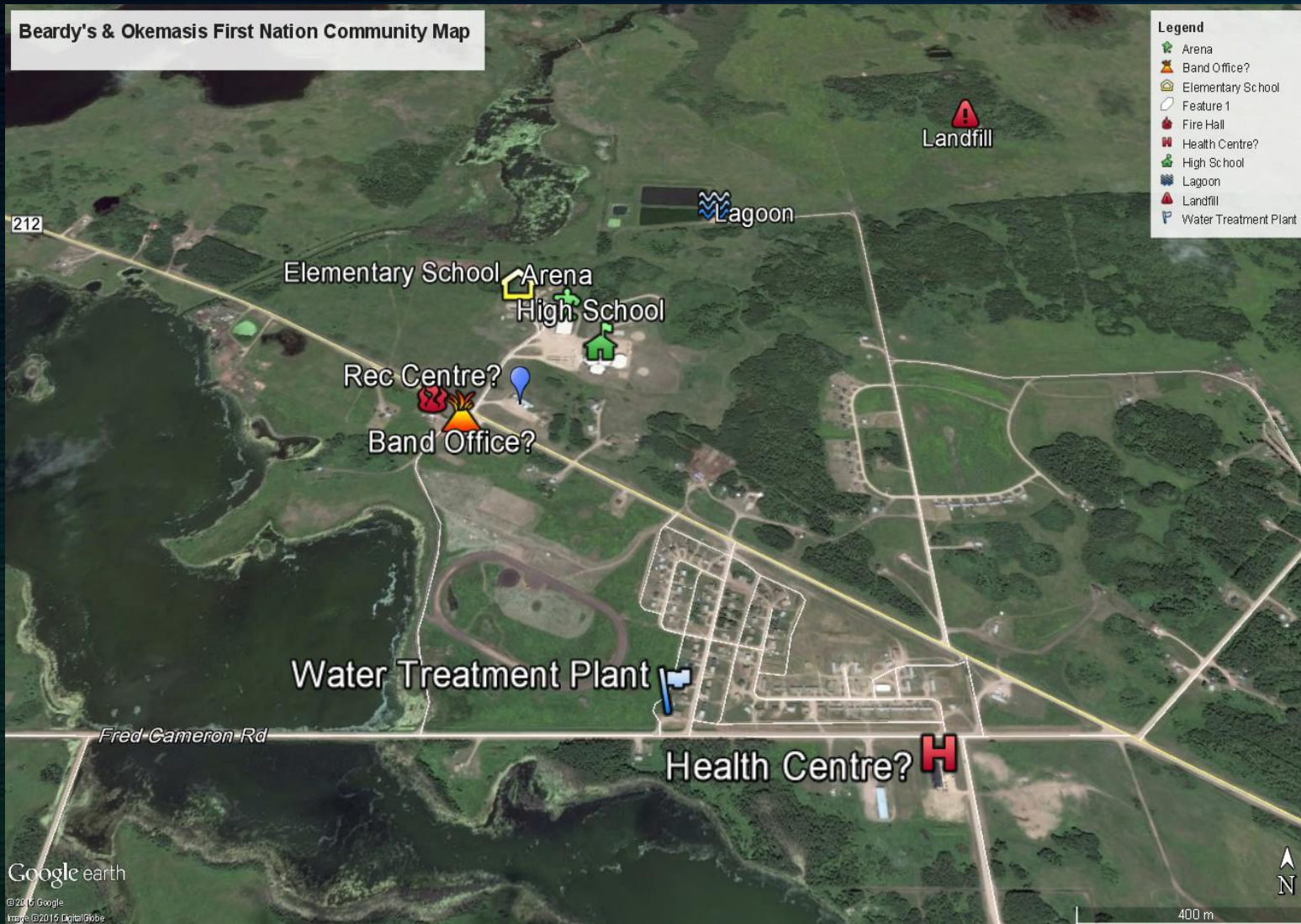
2BBE569A.kmz

GIS Based Asset Mapping

- **Environmental Site Assessments**
- **Community Mapping**
- **Investment Attraction**
- **Tourism and Recreation**
- **Historic and Cultural Land Usage**
- **Environmental Monitoring of Industry**
- **Non Renewable and Renewable resource locations**
- **Product tracking**
- **Organic Certification**
- **Wildcraft harvest permitting**
- **Duty to Consult Data**
- **Impact Benefit Agreements**



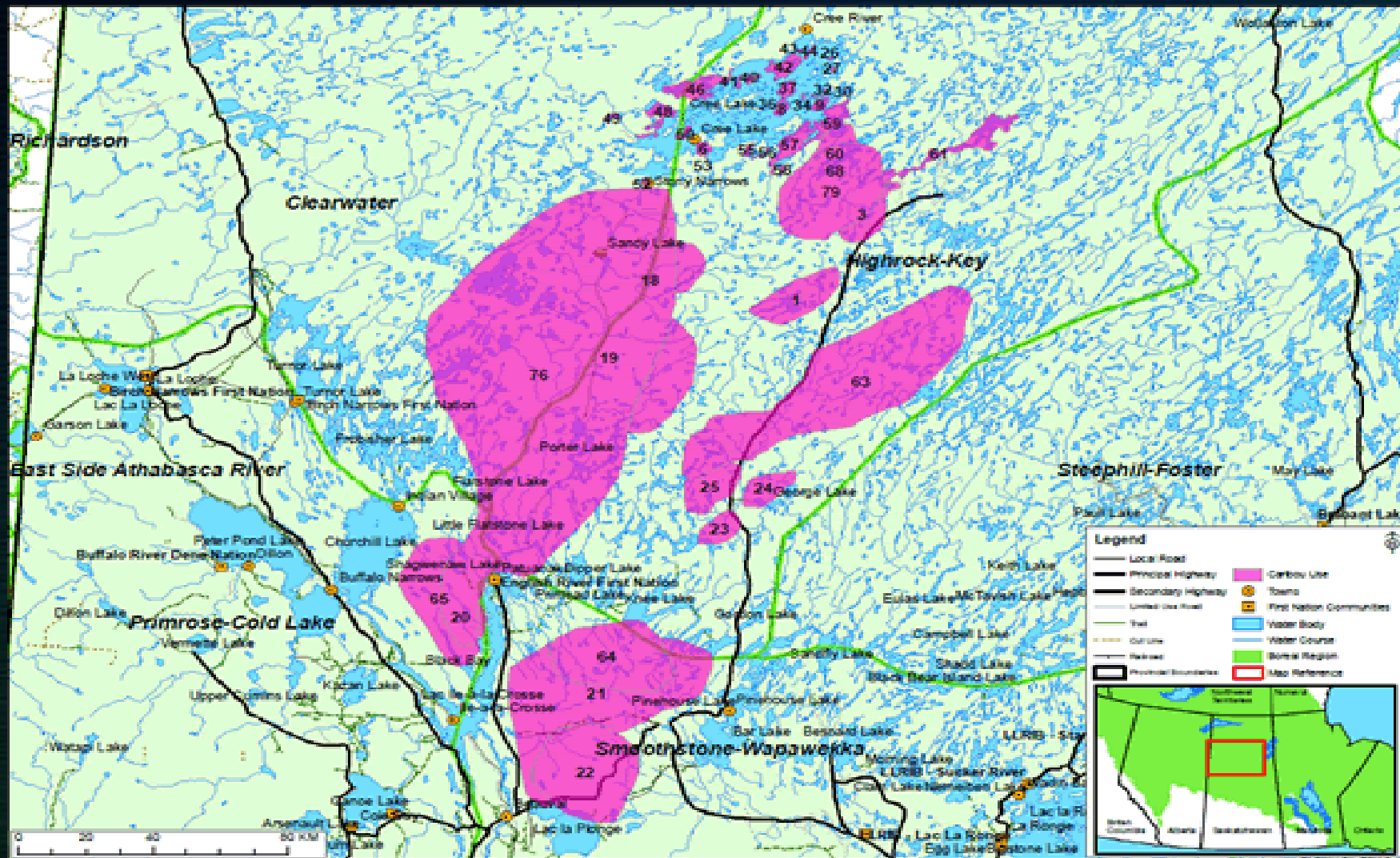
Environmental Site Assessment



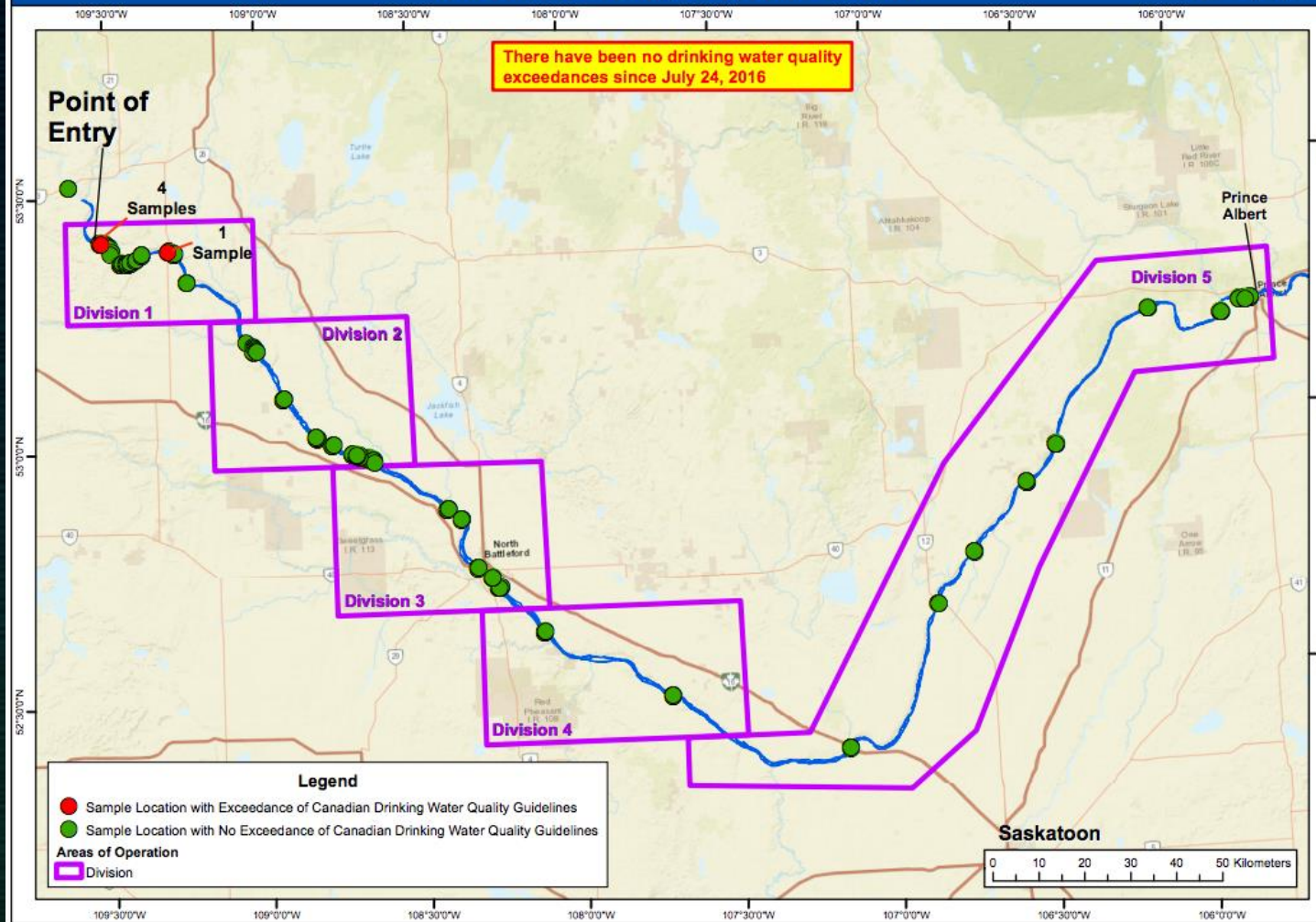
Community Mapping – Beardy's and Okemasis



Investment attraction, Tourism and Recreation – Village of Beauval

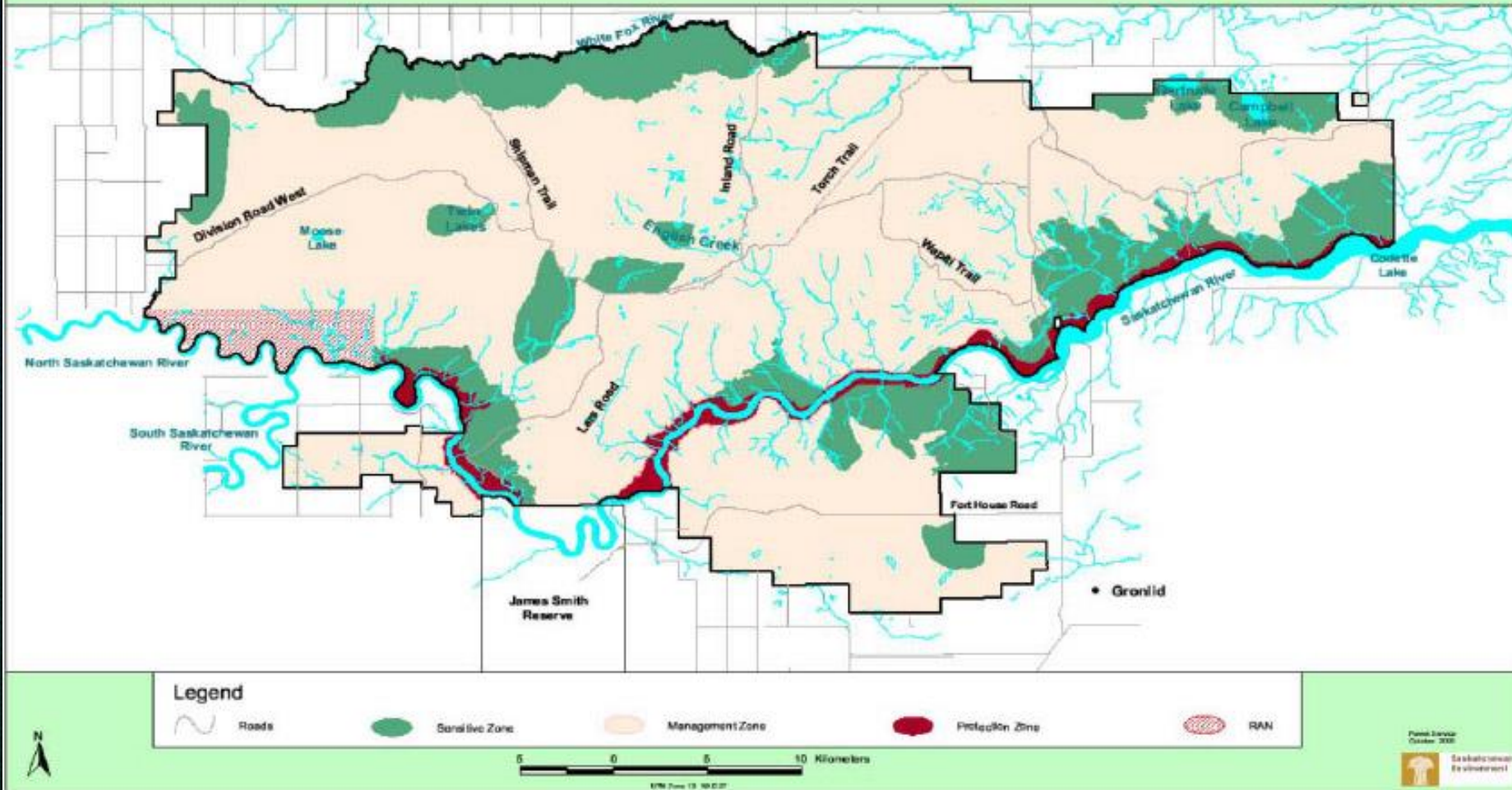


**Historic and Cultural Land Use – Species at Risk
English River Band, Woodland Caribou**

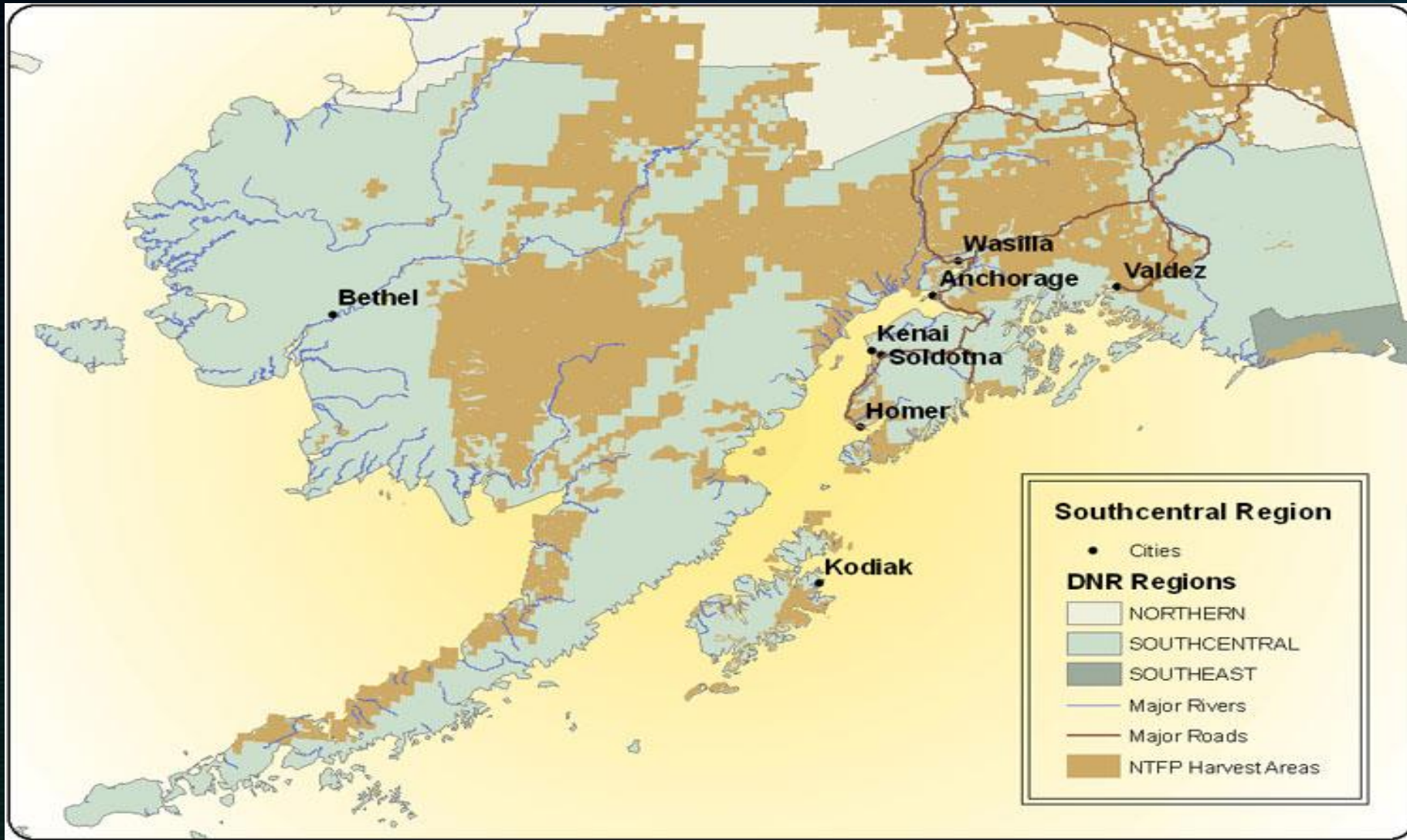


Environmental Monitoring of Industry – Husky Oil Spill

Zones and Proposed Representative Area Fort a la Corne Provincial Forest

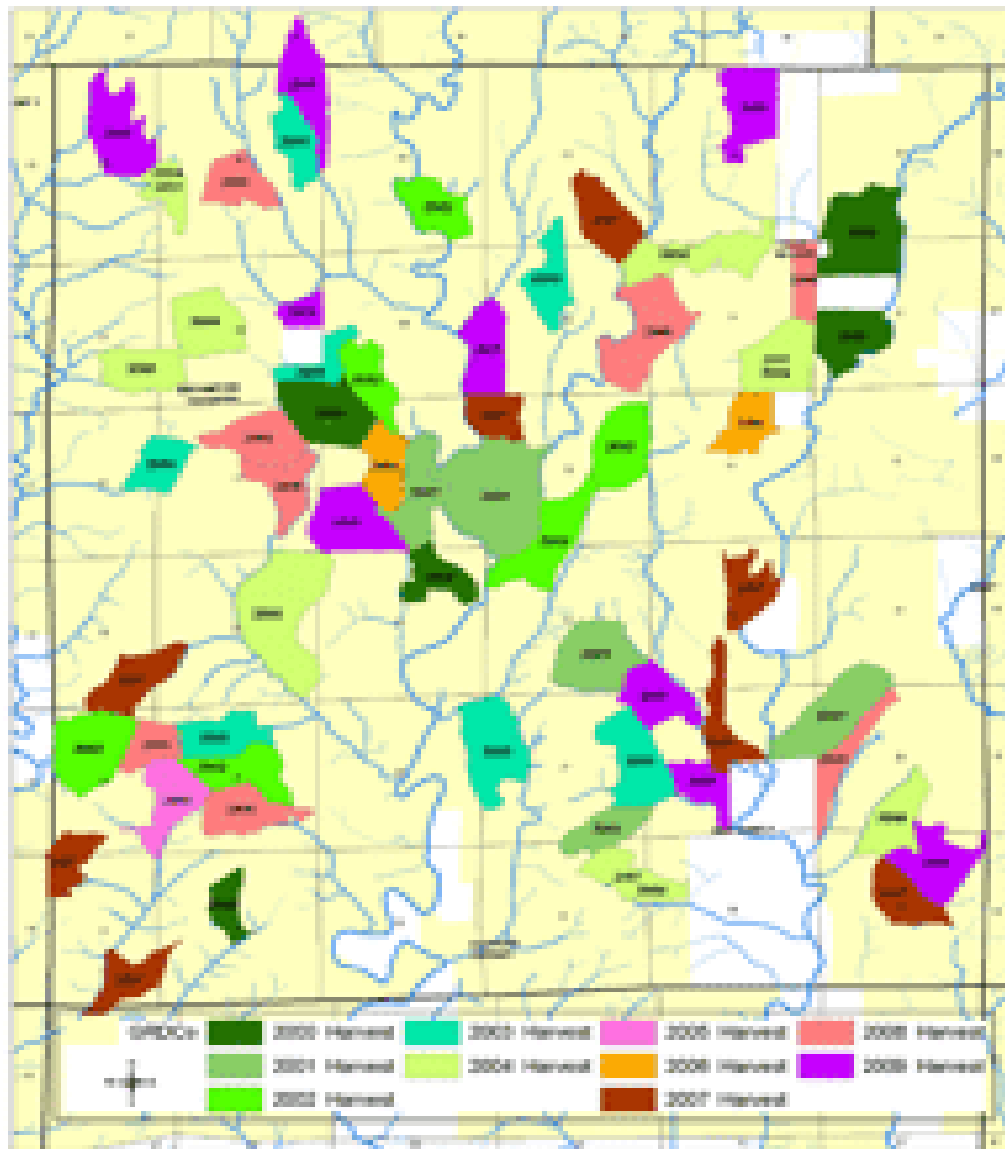


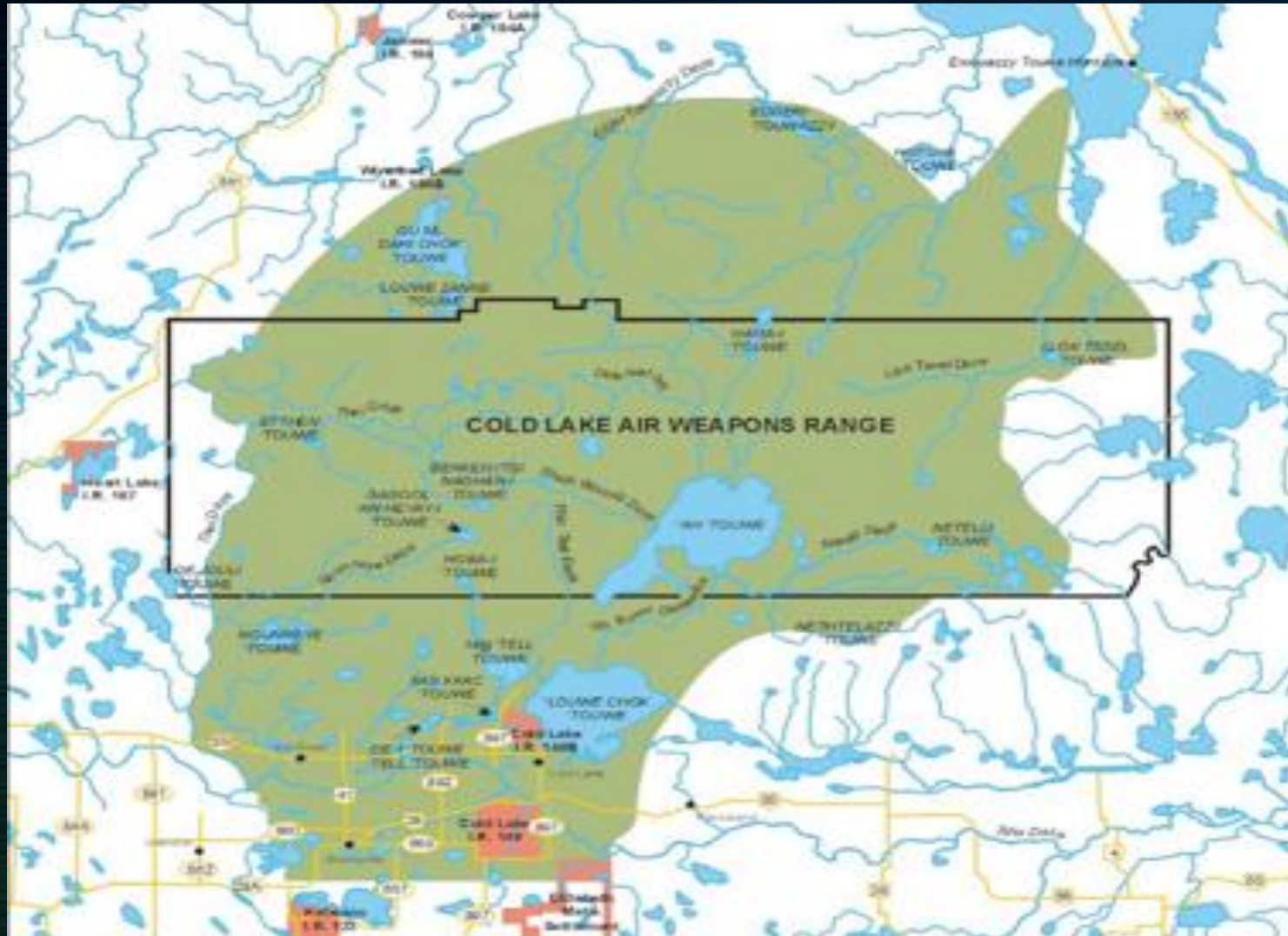
Resource Locations – Land Planning – James Smith, Ft a la Corne



Resource Locations, Harvest Permitting, Organic Certification

Harvest Planning – Forestry or NTFP

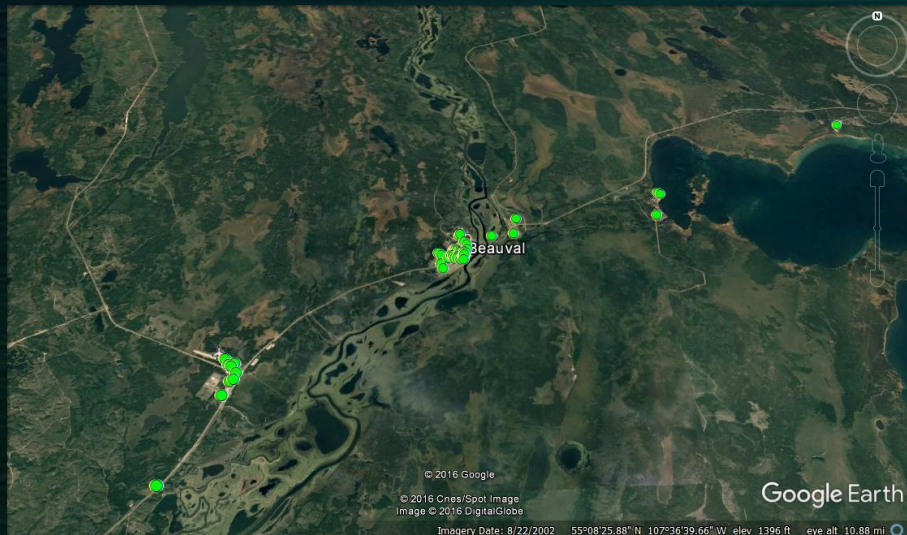




Duty to Consult, Impact Benefit – Cold Lake First Nation, NW SK First Nations and Metis

Use of Drones and Satellite Imagery

- Drone or Satellite imagery can be used to provide high definition imagery, and made GIS based
- Google Earth is an example of GIS based satellite imagery
- Either can be very useful in land planning



Use of Drones and Satellite Imagery

- **Advantages and disadvantages to each:**
- **Need GIS mapping software (Arc GIS) and technical ability to create maps**
- **Satellite imagery can be expensive and out of date**
- **No distortion of image from perspective**

- **Drone operation now requires operator training and Special Flight Operations Certificate from Nav Can**
- **Drone be operated with interface software that controls grid flying**
- **Drone Imagery can be collected at your convenience and expense**

Post Secondary Training

- **Geographic Information Science for Resource Management – 1 yr. certificate - SK Polytechnic, Prince Albert**
- **Geomatics and Surveying Engineering Technology – 2 yr. Diploma – SK Polytechnic, Moose Jaw**
- **Geomatics Minor to Any Arts and Science Degree – U of S**
- **Bachelor of Geographic Information Science (BGISc) – U of R**
 - **Takes Transfer of Credit from SK Poly GIS programs**

Thank You

Randy Johns
CEO
KCDC

Scott Bell
CED Instructor
KCDC

Shavon Norman
CED Student
Flying Dust

Chelsea Custer
CED Student
Pelican Narrows

Echoing Thunder Kytwayhat
Island Lake